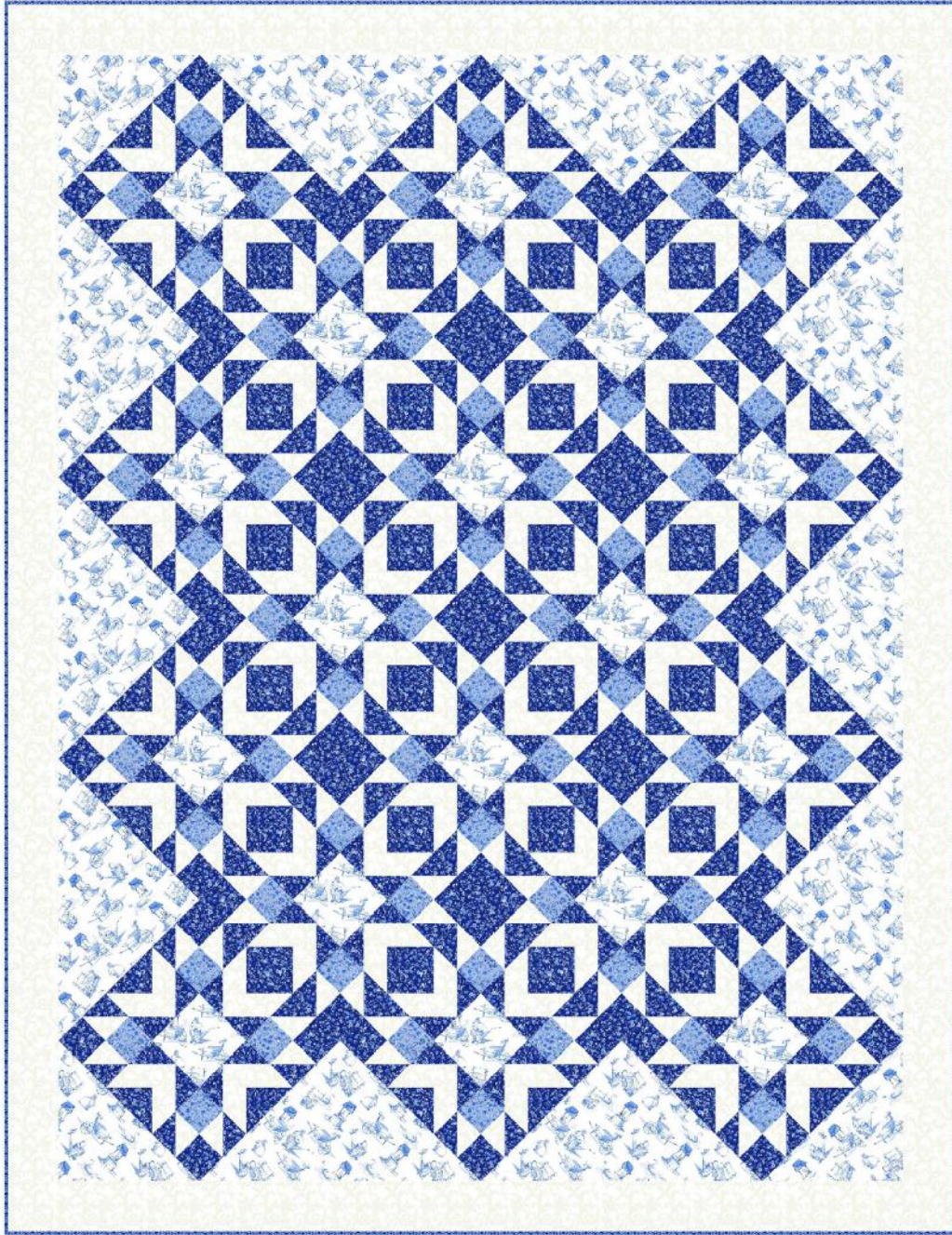


# *Butterfly Garden*

Designed by Wendy Sheppard  
Featuring Williamsburg's Annabelle Collection

SIZE: 57" x 74"



**PLEASE NOTE:** QUILT IMAGE SHOWN IS A DIGITAL REPRESENTATION, FABRIC LOOK MAY VARY ON YOUR PROJECT.  
VISIT OUR *FREE PROJECT* SECTION ONLINE FOR ANY PATTERN UPDATES BEFORE STARTING QUILT PROJECT.



WINDHAM FABRICS



# Butterfly Garden

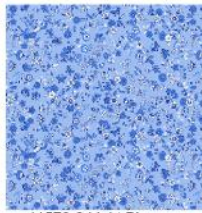
Page 2



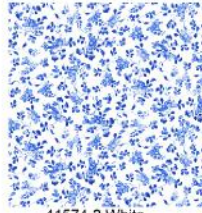
41576-1 Blue



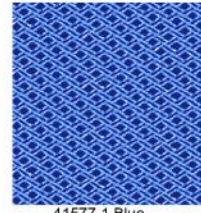
41573-X Multi



41576-3 Light Blue



41574-2 White



41577-1 Blue



32034-18 \*

## Supplies:

2 1/8y: small blue on blue floral print (41576-1 Blue)

1 3/4y: garden tool print (41573-X Multi)

2 1/2y: white tonal (3203 -18 White)

1/2y: light blue small floral print (41576-3 Light Blue)

Optional: 1/2y of blue on blue lattice print (41577-1 Blue), cut into 2 1/4" strips. Piece strips to make a continuous binding strip.

63" x 80" piece of backing fabric (4 1/2y)

63" x 80" piece of batting

Basic sewing supplies

## Cutting Instructions:

[Note - Since quilt center is set on-point, it is advisable to measure quilt center first before cutting outer border strips.]

1. From small blue on blue floral, cut for:

Pieced blocks-

Widthwise, 22 (2 1/2" x 42"). Subcut 360 (2 1/2" x 2 1/2") squares.

Widthwise, 6 (2 7/8" x 42"). Subcut 72 (2 7/8" x 2 7/8") squares.

2. From garden tool, cut for:

Pieced blocks -

Widthwise, 2 (4 1/2" x 42"). Subcut 18 (4 1/2" x 4 1/2") squares.

Setting triangles -

Widthwise, 1 (9 3/8" x 42"). Subcut 2 (9 3/8" x 9 3/8") squares. Subcut each square diagonally once to yield 4 corner setting triangles.

Widthwise, 2 (18 1/4" x 42"). Subcut 3 (18 1/4" x 18 1/4") squares. Subcut each square diagonally twice to yield 12 side setting triangles. The quilt will use 10.

# Butterfly Garden

## Page 3

3. From white tonal, cut for:

Pieced blocks -

Widthwise, 6 (2 7/8" x 42"). Subcut 72 (2 7/8" x 2 7/8") squares.

Widthwise, 9 (4 1/2" x 42"). Subcut 144 (2 1/2" x 4 1/2") rectangles.

Outer border -

Widthwise, 7 (3 1/2" x 42"). Piece strips and subcut 2 (3 1/2" x 57 1/2") and 2 (3 1/2" x 68 1/2") strips.

4. From light blue small floral, cut for:

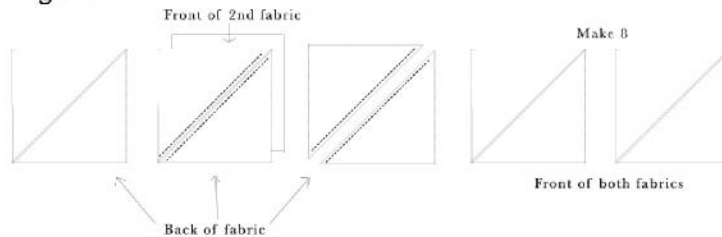
Pieced blocks -

Widthwise, 5 (2 1/2" x 42"). Subcut 72 (2 1/2" x 2 1/2") squares.

### Block Assembly

1. HST units. Draw a diagonal line on the wrong side of 1 (2 7/8" x 2 7/8") small blue on blue floral square. Place square, right sides together, on 1 (2 7/8" x 2 7/8") white tonal square. Sew 1/4" away from, and on right and left sides of drawn line. Cut along drawn line to yield 2 HST units.

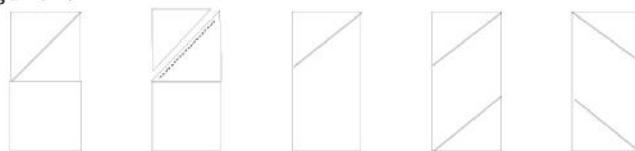
**Figure 1**



Repeat to make a total of 8 HST units.

2. Parallelogram units. Draw a diagonal line on the wrong side of 1 (2 1/2" x 2 1/2") small blue on blue floral square. Place square, right sides together, on 1 (2 1/2" x 4 1/2") white rectangle. Sew on drawn line. Trim 1/4" away from sewn line. Open and press to reveal small blue on blue floral corner triangle. Repeat with another (2 1/2" x 2 1/2") small blue on blue floral square diagonally and parallel to the first first corner triangle on the same (2 1/2" x 4 1/2") white rectangle to complete 1 parallelogram unit.

**Figure 2**



# Butterfly Garden

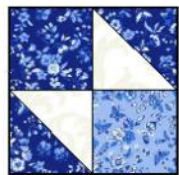
Page 4



Repeat to make 4 units, and 4 reversed units.



3. Corner units. Sew 2 HST units, 1 (2 1/2" x 2 1/2") small blue on blue floral and 1 (2 1/2" x 2 1/2") light blue floral squares into a 4-patch unit.

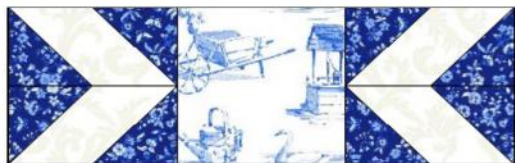


Repeat to make a total of 4 corner units.

4. Middle units. Sew 1 parallelogram unit and 1 reversed parallelogram unit together to make 1 middle unit.



5. Sew two middle units to the opposite sides of 1 (4 1/2" x 4 1/2") garden tool square to make a row.



Sew 2 corner units to the opposite sides of 1 middle unit to make a row, as shown. Repeat to make 2 rows.





# Butterfly Garden

Page 5

6. Sew rows together to complete 1 block.



Repeat to make a total of 18 blocks.

## Quilt Assembly

1. Quilt Center:

Diagonal rows. Arrange and sew together setting triangles and pieced blocks into diagonal rows.

Rows 1&6: 2 side setting triangles and 1 pieced block.

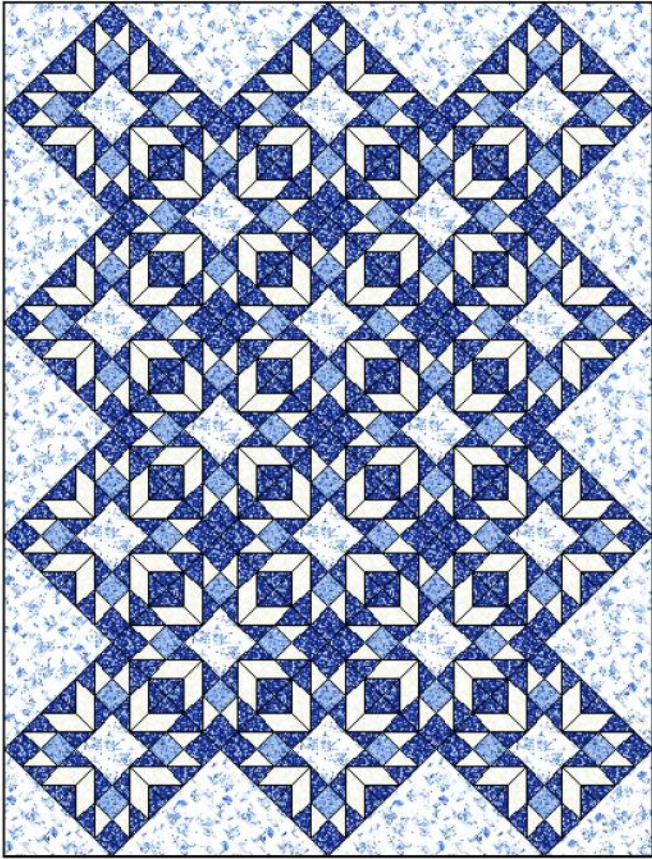
Rows 2&5: 2 side setting triangles and 3 pieced blocks.

Rows 3 &4: 1 side setting triangles, 5 pieced blocks and 1 corner setting triangle.

Sew diagonal rows together, and add 2 corner setting triangles to the remaining corners to complete quilt center.

# *Butterfly Garden*

Page 6

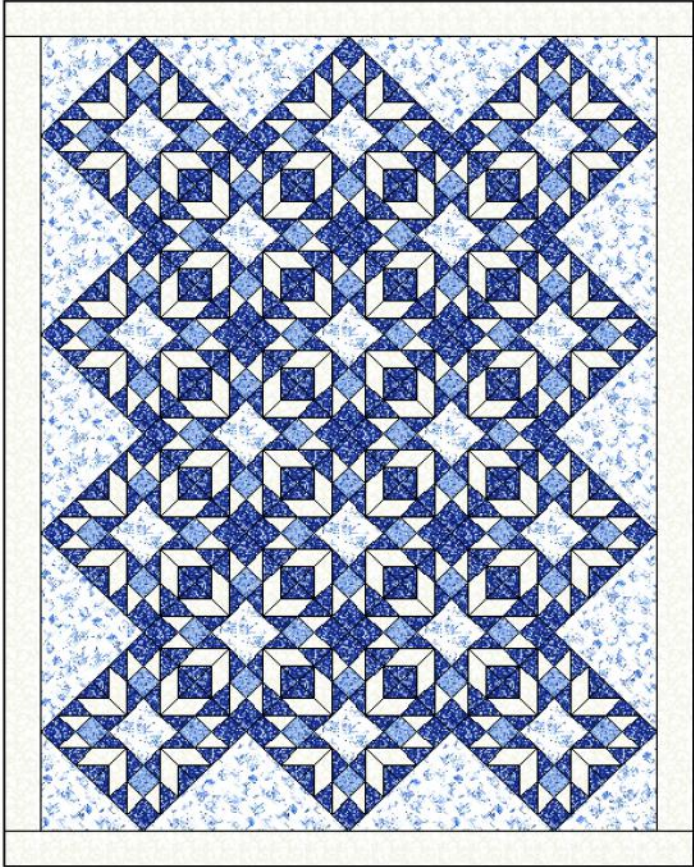


If needed, trim around quilt center to include 1/4" seam allowance. Quilt center should measure 51 1/2" x 68 1/2" approximately from raw edge to raw edge.

2. Outer border. Sew 2 (3 1/2" x 68 1/2") white strips on the opposite long sides of quilt center. Sew 2 (3 1/2" x 57 1/2") white strips on the remaining opposite short sides of quilt center to complete quilt top.

# *Butterfly Garden*

Page 7



## Quilting Instructions:

1. With the backing fabric laying taut, place batting and then quilt top to form quilt sandwich. Baste sandwich. Quilt as desired. Bind to finish quilt.